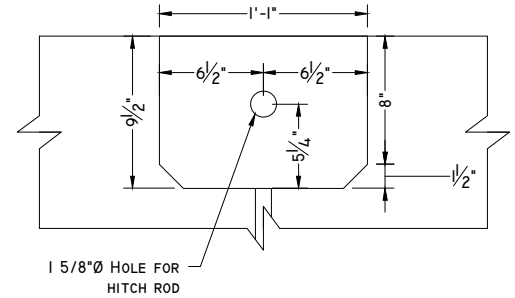
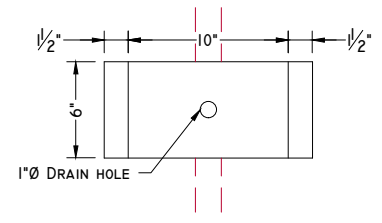


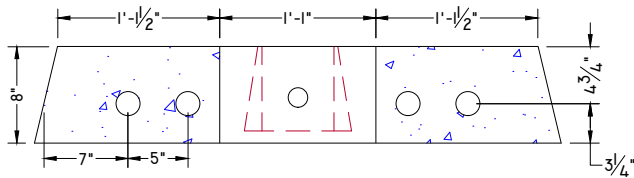
PLAN VIEW



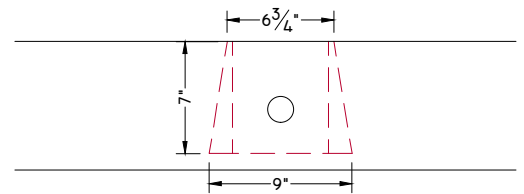
HITCH ROD POCKET ELEVATION
SCALE: 1" = 1'-0"



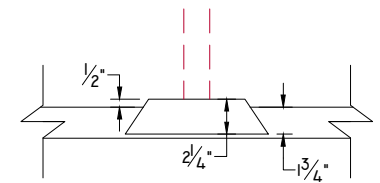
HITCH ROD POCKET PLAN VIEW
SCALE: 1" = 1'-0"



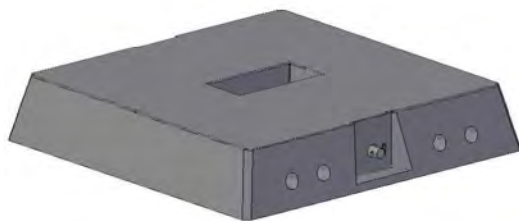
SECTION A-A



SIDE POCKET ELEVATION
SCALE: 1" = 1'-0"



SIDE POCKET PLAN VIEW
SCALE: 1" = 1'-0"



CONCEPTUAL VIEW - NTS

Manufacturing Notes

- 1.1. CONCRETE COMPRESSIVE STRENGTH: 5000PSI
- 1.2. AIR ENTRAINMENT: 4-6%
- 1.3. GRADE 60 REINFORCEMENT
- 1.4. STRUCTURAL FIBER REINFORCEMENT

Physical Specifications:

ACTUAL DRY WEIGHT: 1,105 LBS
BUOANCY WEIGHT: 645 LBS

